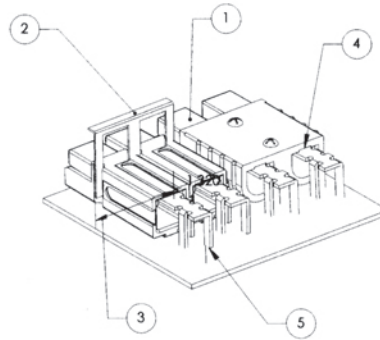




# Installation

## Instructions

1. Install Powerclaw assembly onto circuit board and verify proper insertion of leads through the circuit board.
2. Slide staple over Powerclaw or Locking Powerclaw or insert mounting screws into SB Powerclaw<sup>®</sup> and insert into board.
3. Fasten staple by bending the leads on the opposite side of the board. Fasten screws by use of proper nuts on opposite side of board.
4. Verify that the edge of the Powerclaw contact touches the edge of the housing on the top face. This insures proper contact alignment in housing.
5. Solder circuit board leads by wave or hand soldering.  
We suggest performing solder reflow operations prior to insertion and installation of Powerclaw connectors.



\* Screws not included in connector; suggested size 6-32UNC.