

The innovative SB® connectors provide cost-effective reliability, design flexibility and safety for your products' manufacture, installation and maintenance.

APP's 2 pole connector is available with a 120 amp rating, 600 Volts continuous AC or DC operation. There are SB® connectors for many applications and wire sizes, #2 to #6 AWG (33.6 to 13.3 mm<sup>2</sup>). Mechanical keys ensure connectors will only mate with connectors of the same color. Different color housings are selected to identify voltages, thus preventing mismatching of the power supply system.

## FEATURES

- **Molded side grooves**  
*Allows for a secure panel mounting fit*

- **Mechanical keyed housings**  
*Prevents accidental mating of components operating at different voltage levels*

- **Single-piece housing and unitized construction**  
*Provides industrial quality and durability*



## PRODUCT SPECIFICATIONS

| Connector Model                                    | SB ®120      | Connector Model                            | SB ®120      |
|--|--------------|--|--------------|
| UL Current Rating (Amperes)*                       | 120*         | Life                                       |              |
| UL Voltage Ratings (Volts)                         | 600*         | a. No load (Contact/Disconnect Cycles)     | To 10,000    |
| Contact Barrel Wire Size (AWG)                     | #2 to #6     | b. Under Load (Hot Plug 250 cycles @ 120V) | 60A          |
| (mm <sup>2</sup> )                                 | 33.3 to 13.3 | Avg. Connection/Disconnect (lbs)           | 20           |
| Maximum Wire Insulation Diameter (inches)          | 0.575        | Operating Temperature Range °C**           | -20° to 105° |
| (mm)   | 14.6         | Flammability Rating of Housing Material    | UL94 V-0     |
| AVG Contact Resistance* (micro-ohms)               | 136          |  |              |
| Insulation Withstanding Test Voltage (Volts AC/DC) | 2200         |  |              |
| Contact Retention Force (lbs)                      | 100          |  |              |

\* UL Rated for 75°C rated wire or cable size  
\*\* Contact factory for higher temperature rated connector  
SB®, UL and CSA Reference: This equipment is an Underwriters Laboratories Inc® recognized component. It is also listed by the Canadian Standards Association as certified.

## ORDERING INFORMATION

### 2 Pole Housing & 120 amp Contacts

| Part Number | Housing Color | Wire |        |
|-------------|---------------|------|--------|
|             |               | AWG  | sq. mm |
| 6800G1      | Gray          | #2   | 33.6   |
| 801G1       | Blue          | #2   | 33.6   |
| 6800G2      | Gray          | #4   | 21.1   |
| 6801G2      | Blue          | #4   | 21.1   |
| 6800G3      | Gray          | #6   | 13.3   |
| 6801G3      | Blue          | #6   | 13.3   |

### Housing Only

| Part Number | Description  |
|-------------|--------------|
| 6810G1      | Gray housing |
| 6810G2      | Blue housing |

### 120 amp Contacts

| Part Number | Description     | Wire |       |
|-------------|-----------------|------|-------|
|             |                 | AWG  | sq.mm |
| 6811G1      | Contact set (2) | #2   | 33.6  |
| 6811G2      | Contact set (2) | #4   | 21.1  |
| 6811G3      | Contact set (2) | #6   | 13.3  |

### Bushings

| Part Number | Description   | Wire     |           |
|-------------|---------------|----------|-----------|
|             |               | AWG      | sq. mm    |
| 5919        | Use with 1319 | #2 to #4 | 33.6/21.2 |
| 5920        | Use with 1319 | #2 to #6 | 33.6/13.3 |
| 5921        | Use with 1319 | #2 to #8 | 33.6/8.4  |

### Accessories

| Part Number   | Description                               |
|---------------|---|
| SB120-HDL-RED | SB handle with hardware-red               |
| 981G1         | Cable clamp for 2 single conductor cables |

### Tooling

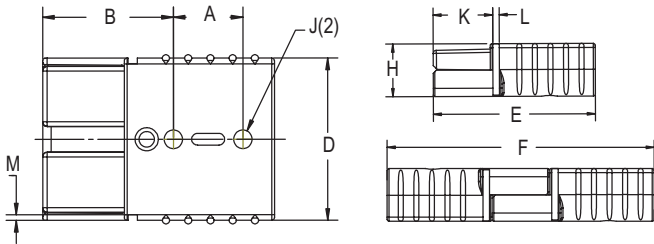
| Part Number | Description               |
|-------------|---------------------------|
| 1368        | Hand tool - #2 to #8      |
| 1387G1      | Pneumatic tool - #2 to #8 |
| 1388G4      | - die for #2 to #8        |
| 1389G4      | - locator #2 to #8        |

## DIMENSIONS

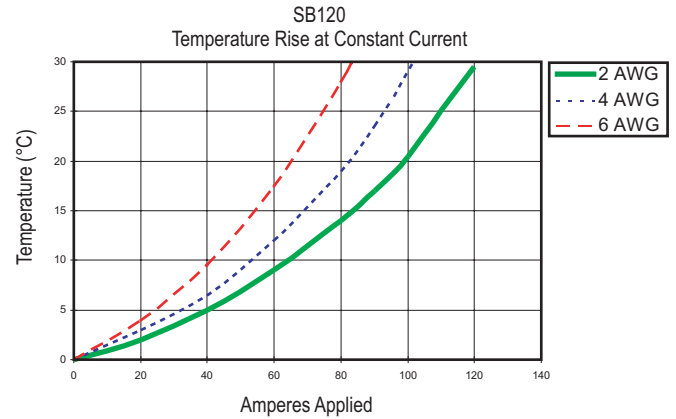
### Housing

|                     | -A-   |     | -B-   |      | -D-   |      | -E-  |      | -F-    |      |
|---------------------|-------|-----|-------|------|-------|------|------|------|--------|------|
| Series              | mm    | in. | mm    | in.  | mm    | in.  | mm   | in.  | mm     | in.  |
| SB <sup>®</sup> 120 | 19.05 | .75 | 35.81 | 1.41 | 44.45 | 1.75 | 63.5 | 2.50 | 104.65 | 4.12 |

|                     | -H-   |     | -J-  |     | -K-   |     | -L-  |     | -M-  |     |
|---------------------|-------|-----|------|-----|-------|-----|------|-----|------|-----|
| Series              | mm    | in. | mm   | in. | mm    | in. | mm   | in. | mm   | in. |
| SB <sup>®</sup> 120 | 20.62 | .81 | 5.05 | .20 | 23.37 | .92 | 2.54 | .10 | 1.52 | .06 |

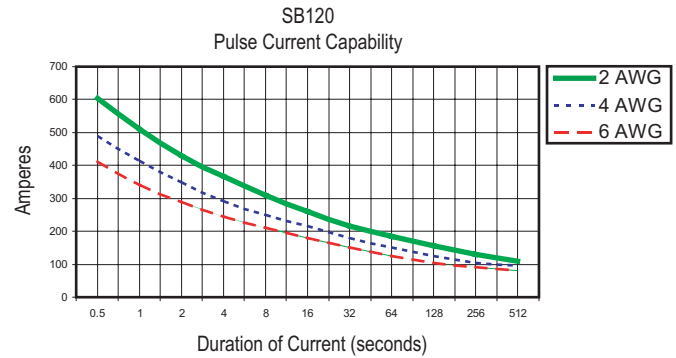
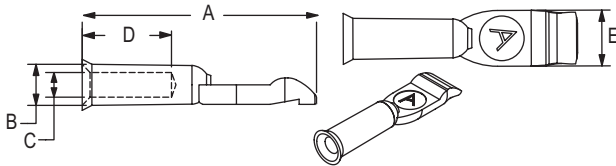


## TEMPERATURE RISE CHARTS



### Contacts

| Part Number | Contact Detent | -A- mm | -A- in. | -B- mm | -B- in. | -C- mm | -C- in. | -D- mm | -D- in. | -E- mm | -E- in. |
|-------------|----------------|--------|---------|--------|---------|--------|---------|--------|---------|--------|---------|
| 6811G1      | Low            | 49.27  | 1.94    | 21.34  | .84     | 11.18  | .44     | 8.64   | .34     | 10.42  | .41     |
| 6811G2      | Low            | 49.27  | 1.94    | 21.34  | .84     | 11.18  | .44     | 8.64   | .34     | 10.42  | .41     |
| 6811G3      | Low            | 49.27  | 1.94    | 21.34  | .84     | 11.18  | .44     | 8.64   | .34     | 10.42  | .41     |



### Bushings - (for use with 6811G1 contacts)

| Part Number | Reduces From | -A- mm | -A- in. | -B- mm | -B- in. | -C- mm | -C- in. |
|-------------|--------------|--------|---------|--------|---------|--------|---------|
| 5919        | #2 to #4 AWG | 21.34  | .84     | 8.36   | .329    | 7.24   | .285    |
| 5920        | #2 to #6 AWG | 21.34  | .84     | 8.36   | .329    | 5.76   | .227    |
| 5921        | #2 to #8 AWG | 21.34  | .84     | 8.36   | .329    | 4.6    | .181    |



CSA Certified  
File No. LR25154



UL Recognized  
File No. E26226

All Data Subject To Change Without Notice

DS-SB120 REV01

HEADQUARTERS: 13 Pratts Junction Road, P.O. Box 579, Sterling, MA 01564 T:978-422-3600 F:978-422-3700

EUROPE: Rathealy Road, Fermoy Co. Cork, Ireland T:353-(0)25-32277 F:353-(0)25-32296

[www.andersonpower.com](http://www.andersonpower.com)