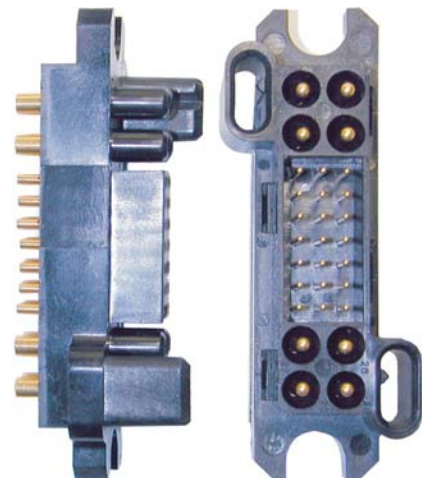


Anderson Power Products new line of power drawer series connectors gives our customers more selections than ever to meet their power connector needs. These cost effective, mixed power and signal drawer connectors are manufactured using the same high quality standards that have made APP a leader in the power connector industry for years. The drawer series can be used for a wide range of drawer-type applications such as rectifiers, mainframe computers, telecommunications, and network equipment. If power and signal is required, let Anderson Power Products be "Your Best Connection."

## FEATURES

- **Industry standard contacts**  
*Allows for cross mating with competitive product*
- **Wide selection of contact termination**  
*Provides the designer a wide variety of packaging options*
- **First-mate and last-mate capability**  
*Grounds and powers the system before mating of signal circuits*
- **Integral guide pins**  
*Corrects misalignment during blind mating*
- **Optional floating mount**  
*Reduces fatiguing stress on connectors during blindmating*



## PRODUCT SPECIFICATIONS

Electrical	#12	#20	Materials	
Current Rating - amps	35	5	Insulator	PBT UL94 V-0
Voltage Rating - volts	250	250	Crimp Pin or Socket Body	Copper alloy
Voltage Drop mV	3.30	0.70	Solder Cup Pin or Socket Body	Brass
Insulator Dielectric Strength	1500 VDC		PCB Pin or Socket Body	Brass
Working Temperature Range	-40 to +125 degree C°		Female Contact	BeCu
Mechanical	#12	#20	Contact Plating	
Insertion Force Per Contact - lbs	1.80	0.43	#12	Silver Over Nickel
- kg	0.82	0.20	#20 and #12AU	Gold Over Nickel
Extraction Force Per Contact - lbs	1.02	0.07		
- kg	0.46	0.03		
			UL File Number: E26226	

## ORDERING INFORMATION

### Housings Only

Part Number	Description
035LDXPX1212	Pin housing
035LDXSX1212	Socket housing

### Socket Contacts

Part Number	Termination	Wire	
		AWG	sq. mm
SC12-SN	crimp	#12	2.5
SS12-SN	solder cup	#12	2.5
SP12-SN	PCB tail	#12	2.5
SC20-GN	crimp	#20	.5
SS20-GN	solder cup	#20	.5
SP20-GN	PCB tail	#20	.5

### Pin Contacts

Part Number	Termination / Pin Length	Wire	
		AWG	sq. mm
PC20SGN	crimp, standard	#20	.5
PC20FGN	crimp, premate	#20	.5
PC20LGN	crimp, postmate	#20	.5
PS20SGN	solder cup, standard	#20	.5
PS20FGN	solder cup, premate	#20	.5
PS20LGN	solder cup, postmate	#20	.5
PP20SGN	PCB tail, standard	#20	.5
PP20FGN	PCB tail, premate	#20	.5
PP20LGN	PCB tail, postmate	#20	.5
PC12SGH	crimp, standard	#12 Au*	2.5
PC12FGH	crimp, premate	#12 Au*	2.5
PC12LGH	crimp, postmate	#12 Au*	2.5
PS12SGH	solder cup, standard	#12 Au*	2.5
PS12FGH	solder cup, premate	#12 Au*	2.5
PS12LGH	solder cup, postmate	#12 Au*	2.5
PP12SGH	PCB tail, standard	#12 Au*	2.5

### pin contacts continued

Part Number	Termination / Pin Length	Wire	
		AWG	sq. mm
PP12FGH	PCB tail, premate	#12 Au*	2.5
PP12LGH	PCB tail, postmate	#12 Au*	2.5
PC12SSN	crimp, standard	#12	2.5
PC12FSN	crimp, premate	#12	2.5
PC12LSN	crimp, postmate	#12	2.5
PS12SSN	solder cup, standard	#12	2.5
PS12FSN	solder cup, premate	#12	2.5
PS12LSN	solder cup, postmate	#12	2.5
PP12SSN	PCB tail, standard	#12	2.5
PP12FSN	PCB tail, premate	#12	2.5
PP12LSN	PCB tail, postmate	#12	2.5

\* Gold Plating

## WIRE/TOOLING INFORMATION

### Wire Strip Length

The following table represents Anderson Power Products recommended strip lengths for the wire.

Contact Size	Wire Size	inches	mm
#20	#24 - #20	0.21	5.33
#12	#14 - #12	0.27	6.89

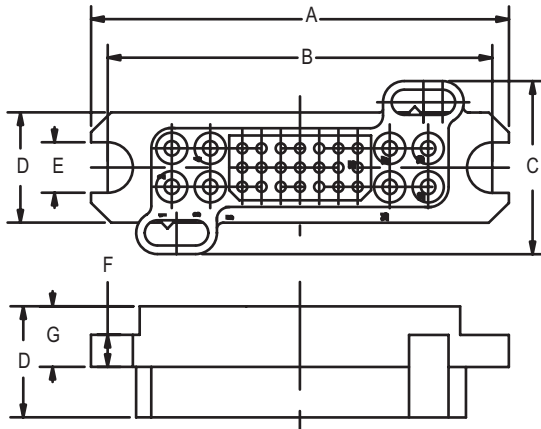
### Crimp Tooling

The following table represents the MIL-STD crimp tooling recommended for crimp contacts. Consult APP factory for ordering information .

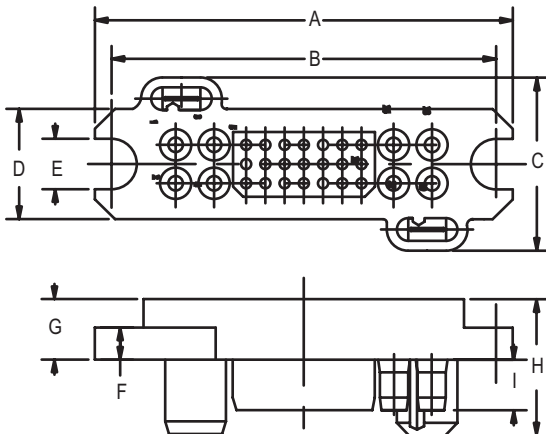
Size	Type	MIL-STD
12 to 24	Crimp Tool	M22520/1-01
	Turret Head and Locator	M22520/1-02

## DIMENSIONS

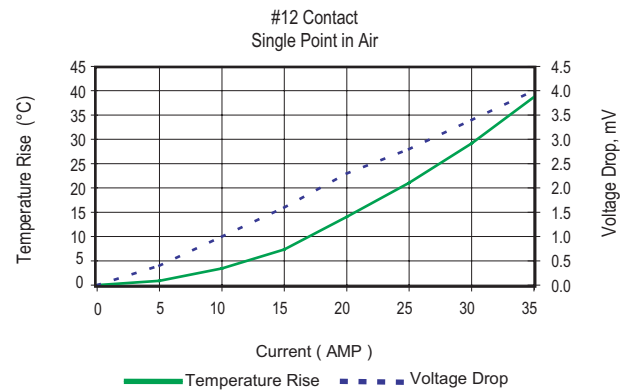
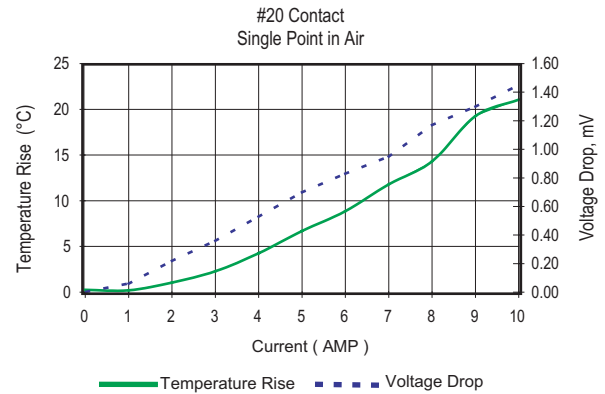
Pin Housing  
Part Number #035LDXPX1212



Socket Housing  
Part Number #035LDXSX1212



## TEMPERATURE RISE CHARTS



### Housings Dimensions

	-A-	-B-	-C-	-D-	-E-
inches	3.26	3.0	1.34	0.87	0.40
mm	82.8	76.2	34.0	22.0	10.16
	-F-	-G-	-H-	-I-	
inches	0.25	0.49	1.06	0.40	
mm	6.35	12.4	27.0	10.2	